



CINCINNATI CENTER CITY
DEVELOPMENT CORPORATION



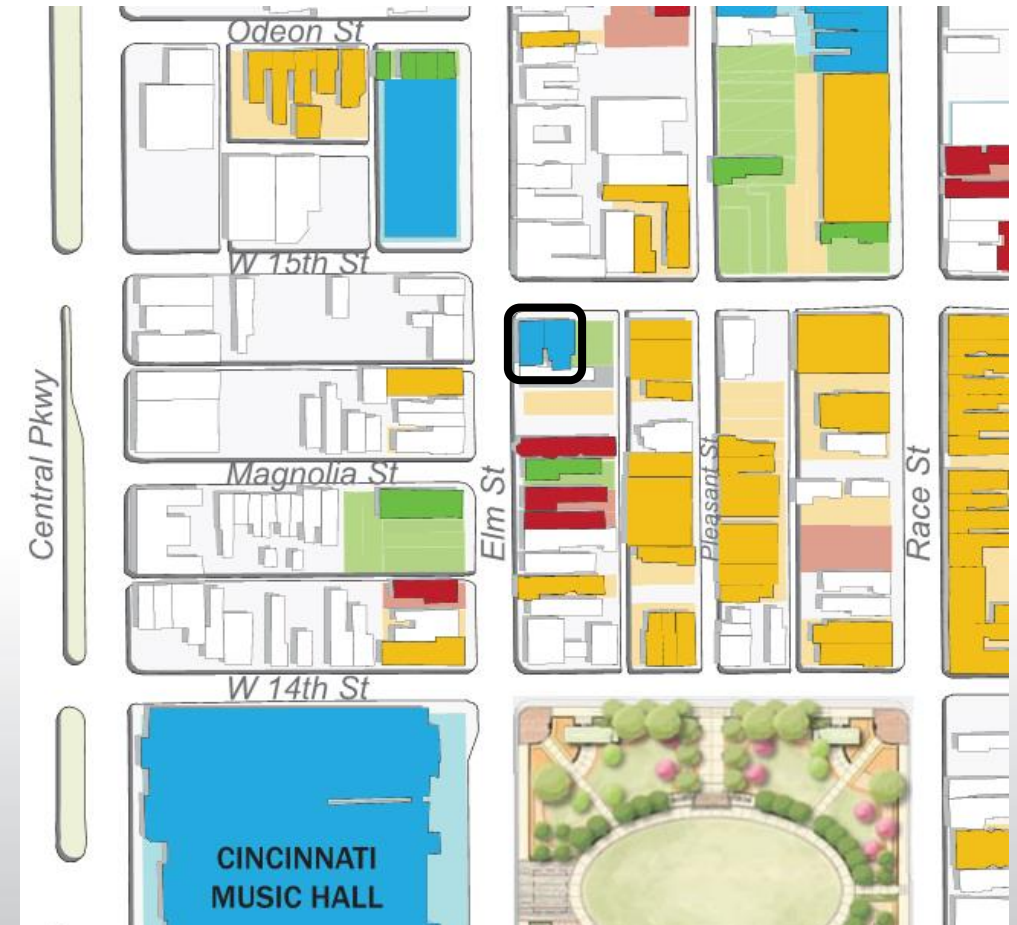


Property Involved

- Part of The Glassmeyer Condominium project, which also includes 131 West 15th Street
- Total project includes 8 market rate residential condominiums and an 868 SF first floor commercial space

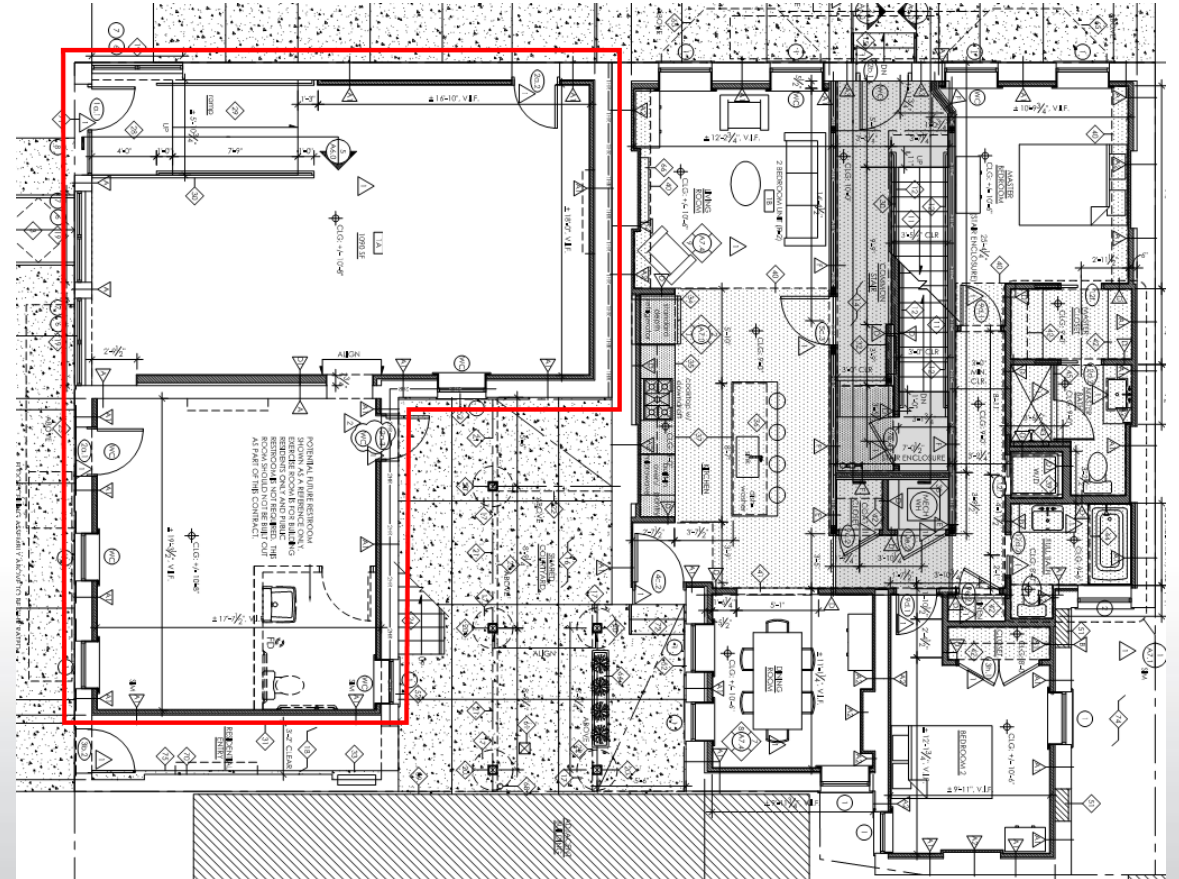
Development Summary

- Construction on the condominiums is substantially complete as of 11/22/17
- Renovations have followed historic guidelines in forming the design





- 868 SF of currently vacant commercial space will be rehabilitated and re-opened
- The storefront is historic to the building, and has previously been used as a dry cleaner, cigar shop, and corner store



Zoning Relief - Use Variance Application

The RM 1.2 multi-family residential zone where 1432 Elm is located does not allow the commercial space to be used as a commercial space.

3CDC is seeking a variance to allow this commercial space to be reactivated as an office, personal service, or mercantile use.





THANK YOU

