

GENERAL ELEVATION NOTES

1. ALL EXTERIOR WALLS SHALL BE CLEANED (PRESSURE-WASHED) AND RE-POINTED WHERE REQUIRED. REPLACE CRACKED AND DAMAGED BRICK WITH SOUND BRICK SALVAGED FROM ELSEWHERE IN THIS BUILDING.
2. FOLLOWING CLEANING AND REPOINTING, PAINT NORTH AND WEST EXTERIOR BRICK WALLS (PREVIOUSLY PAINTED). DO NOT PAINT SOUTH AND EAST EXTERIOR BRICK WALLS.
3. PAINT ALL NON-STONE TRIM CLEAN AND REMOVE PAINT FROM SANDSTONE SILLS AND LINTELS. DO NOT PAINT STONE TRIM.
4. RE-POINT AND REPAIR EXISTING FINISH (PARPING OR STUCCO, FOR EXAMPLE) OF EXTERIOR BRICK WALLS ABOVE ROOFTOP (PENTHOUSE STRUCTURES) AS REQUIRED AND PAINT. REPLACE ALL LOOSE STEEL DOOR LINTELS AT PENTHOUSE STRUCTURES AND REPLACE SPALLED BRICK ABOVE THESE OPENINGS AS REQUIRED PRIOR TO REPAIRING EXTERIOR FINISHES.
5. REPLACE ALL SCUFFERS AND DOWNSPOUTS WITH NEW GALV METAL SCUFFERS AND DOWNSPOUTS.
6. WIRE-BRUSH CLEAN ALL EXISTING CAST IRON / STEEL LINTELS, NOTE ANY SEVERELY CORRODED AREAS AND CONTACT ARCHITECT FOR REPAIR RECOMMENDATIONS.
7. CLEAN AND PAINT EXISTING FIRE ESCAPES.
8. REMOVE ALL MISCELLANEOUS UNUSED PIPING, WIRING, CONDUIT AND ANY METAL, PLASTIC, AND WOOD ANCHORAGE DEVICES FOR THESE ITEMS WHEREVER THEY OCCUR ON ANY ELEVATION (ABANDONED SPRINKLER CONNECTIONS FOR EXAMPLE). PATCH AND REPAIR THESE AREAS AS REQUIRED TO MAINTAIN WEATHERTIGHT BUILDING SHELL.
9. ALL SIGNAGE WILL BE INSTALLED UNDER SEPARATE FUTURE PERMITS, BY OTHERS (FUTURE TENANTS).
10. ANCHOR ALL WALL-MOUNTED LIGHT FIXTURES INTO MORTAR JOINTS (NOT BRICK).

WINDOW NOTES

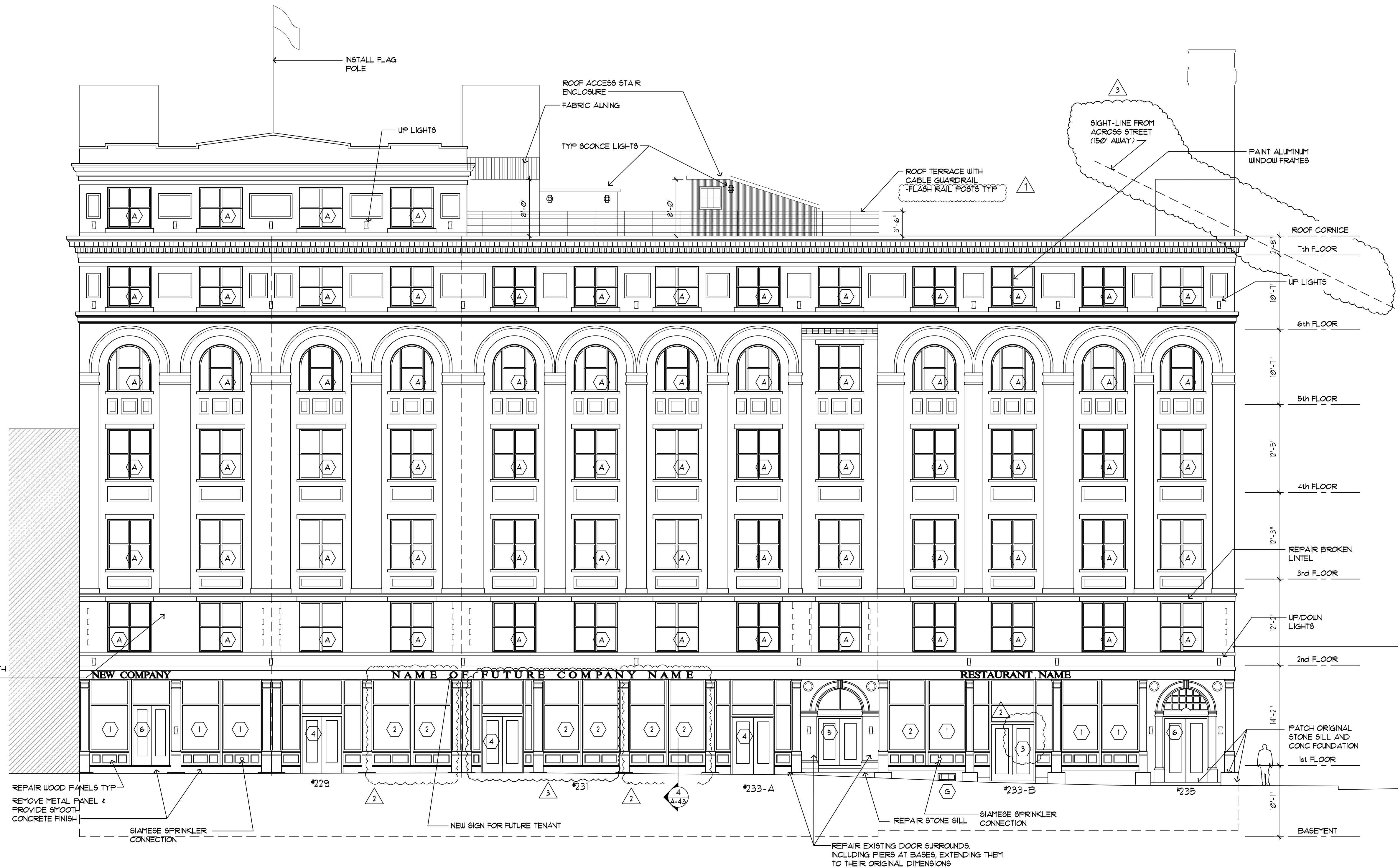
BASIS OF DESIGN FOR ALL ALUMINUM FRAME REPLACEMENT WINDOWS:  
 1"-5 1/2" SERIES 231 SINGLE-HUNG WINDOWS BY UJIAN WINDOWS AND DOOR CORPORATION WITH 1" COLONIAL SIMULATED DIVIDED LITES / GLAZING LOW-E FINISH WHITE - CONFIRM WITH OWNER PRIOR TO ORDERING (ALL WINDOWS SHALL BE CUSTOM-SIZED TO FIT EACH HISTORIC MASONRY OPENING COMPLETELY. FIELD VERIFY ALL OPENING DIMENSIONS FOR REPLACEMENT WINDOWS PRIOR TO ORDERING. PRIOR TO ORDERING WINDOW CONTRACTOR SHALL PROVIDE A SAMPLE INSTALLATION OF PROPOSED WINDOW FOR HISTORIC REVIEW.)

- (A) EXISTING NON-ORIGINAL ALUMINUM FRAME WINDOWS - PROVIDE ALLOWANCE TO REPAIR AND REPLACE MISSING SCREENS AND PAINT EXTERIOR SURFACES
- (B) NEW ALUMINUM WINDOWS IN ORIGINAL BRICKED-IN MASONRY OPENINGS (WITH MATCHING CONFIGURATION)
- (C) NEW ALUMINUM WINDOWS IN NEW MASONRY OPENINGS (WITH MATCHING CONFIGURATION)
- (D) REPLACE ORIGINAL WIRE GLASS/METAL WINDOWS WITH CLEAR GLASS/ALUMINUM WINDOWS WITH SAME CONFIGURATION
- (E) REPLACE NON-ORIGINAL BASEMENT WINDOWS AND NON-ORIGINAL SECURITY BARS WITH NEW ALUMINUM WINDOWS AND NEW SECURITY BARS
- (F) NEW WOOD INTERIOR STOREFRONT - PROVIDE SHOP DRAWINGS
- (G) REPLACE ORIGINAL BASEMENT WINDOW & NON-ORIGINAL SECURITY BARS w/ NEW ALUMINUM WINDOWS AND NEW SECURITY BARS
- (H) REPLACE ORIGINAL WINDOWS w/ NEW ALUMINUM WINDOWS IN SAME CONFIGURATION
- (J) REMOVE EXISTING ROOFING MEMBRANE FROM PARAPET WALL (IF IN PLACE) AND REPAIR ORIGINAL WINDOW, FUR INSIDE OF WINDOW OPENING TO ALIGN WITH FINISHED INTERIOR WALL SURFACE.

(1) DRAWING NOTES

1. REPAIR ORIGINAL STOREFRONTS
2. INSTALL NEW WOOD & GLASS STOREFRONTS WHERE ORIGINAL STOREFRONTS HAVE BEEN PREVIOUSLY REMOVED
3. REPLACE WOOD & GLASS STOREFRONTS WITH NEW DOORS AND MATCHING SIDELIGHTS
4. REPLACE NON-ORIGINAL GARAGE DOOR WITH NEW WOOD DOORS AND SIDELITES
5. REPAIR ORIGINAL DOORS & ENTRANCE AND REPLACE NON-ORIGINAL TRANSOM
6. REPAIR ORIGINAL ENTRANCE & TRANSOM AND ORIGINAL DOORS
7. REPLACE NON-ORIGINAL GARAGE DOOR w/ METAL GARAGE DOOR BASIS OF DESIGN IS OVERHEAD DOOR CORPORATION'S "SERIES 610" WITH "C-715" SLATS. REPLACE TRANSOM ABOVE WITH REPLACEMENT MATCHING EXISTING CONFIGURATION UNLESS NOTED OTHERWISE
8. REPLACE NON-ORIGINAL GARAGE DOOR w/ FRENCH DOORS & BLACK ALUMINUM PICKET RAILING
9. GUARDRAIL AT 3'-6" AFF (AT ROOF PARAPET - SEE APPLICABLE DETAIL)
10. CABLE GUARDRAIL AT 3'-6" AFF (AT ROOF TERRACE - SEE DETAIL)

REMOVE EX METAL LOUVER AND INFILL FACADE OPENING WITH BRICK CONSTRUCTION MATCHING ADJACENT, WITH SALVAGED BRICKS TYP



1 NORTH ELEVATION  
 A-3.1 1/8" = 1'-0"

- Revisions:
- 1 August 31, 2015
  - 2 September 28, 2015
  - 3 November 9, 2015

DENIS L. BACK & ASSOCIATES  
 2128 ALPINE PLACE CINCINNATI OHIO 45206 513-861-2776  
 Architects / Building Consultants

STRIETMANN BUILDING  
 235 WEST 12TH STREET  
 CINCINNATI, OHIO

DATE: 8/25/2015  
 COMM NO: 517  
 SHEET NO:

A-3.1