

THE OVER-THE-RHINE FOUNDATION

Mission

To preserve, protect and celebrate Over-the-Rhine, the historic heart of Cincinnati, by encouraging community growth, good government, planning and responsible development.

Enhancing and Protecting the Over-the-Rhine Historic District



OTRF INFILL COMMITTEE

Over the Rhine Foundation Board of Trustees	Over The Rhine Foundation Infill Committee Members
Danny Klingler	Adam Rayne
Kristen Myers	Ana Ozaki
Marge Hammelrath	Andre Bilokur
Mark Walton	Anne Delano Steinert
Sanyog Rathod	Beth Johnson
Reid Hartman	Danny Klingler
Marilyn Hyland	Denny Dellinger
John Yung	Elizabeth Ickes
Katy Crossen	Eric Haberthier
Sean Suder	Frank Russell
Jenell Hubbard	Jenell Hubbard
Seth Maney	Jennifer LeMasters Wirtz
Darrick Dansby	Jessica Dancer
Joseph Creighton	John Back
Frank Russell	John Yung
Scott Golan	Josh Spring
Sanyog Rathod	Kristen Myers
Andy Holzhauser	Luke Field
Jennifer LeMasters Wirtz	Margy Waller
Tom Hadley	Mark Manley
	Nick Dewald
	Patricia Bittner
	Sean Suder
	Seth Maney
	Shannon Hokanson
	Special Projects: Terry Boling
	Special Projects: Michael McInturf
	Special Projects: John Senhauser

Who are we?

- OTRF Board of Trustees
- Community Members
- Architects
- Real Estate Developers
- Historic Preservationists
- Business Owners

Enhancing and Protecting the Over-the-Rhine Historic District



**OVER THE
RHINE
FOUNDATION**

WHY INFILL

- Our perception of the Over-the-Rhine Historic District today is one of a 19th century urban landscape.
- 50% of the District's historic fabric is now gone



WHY INFILL

- The city's guidelines for new construction were last revised over 15 years ago and do not align with today's needs

Enhancing and Protecting the Over-the-Rhine Historic District



WHY INFILL

- The current guidelines present developers with high and potentially costly project risk

CURRENT GUIDELINES	-vs-	PROPOSED GUIDELINES
Vague Language	REVISE →	Specific Language
Words Only	DESIGN →	Graphic Illustrations
Potential for Clashing Architecture	ENCOURAGE →	Potential for Great Architecture
Key Terms Undefined	DEFINE →	Glossary of Terms
Room for Uncertainty	REVISE →	Create Clarity

Enhancing and Protecting the Over-the-Rhine Historic District



OVER THE
RHINE
FOUNDATION

WHY INFILL

- The new guidelines promote contemporary yet compatible design

Enhancing and Protecting the Over-the-Rhine Historic District



WHY INFILL

- We have pursued a respectful, transparent, and inclusive process, including 20+ engagement meetings with various stakeholders over 5 year period

Enhancing and Protecting the Over-the-Rhine Historic District



Sample Excerpts



TABLE OF CONTENTS

01 MASSING,
HEIGHT & SCALE

02 SETBACK

03 COMPOSITION

04 RHYTHM

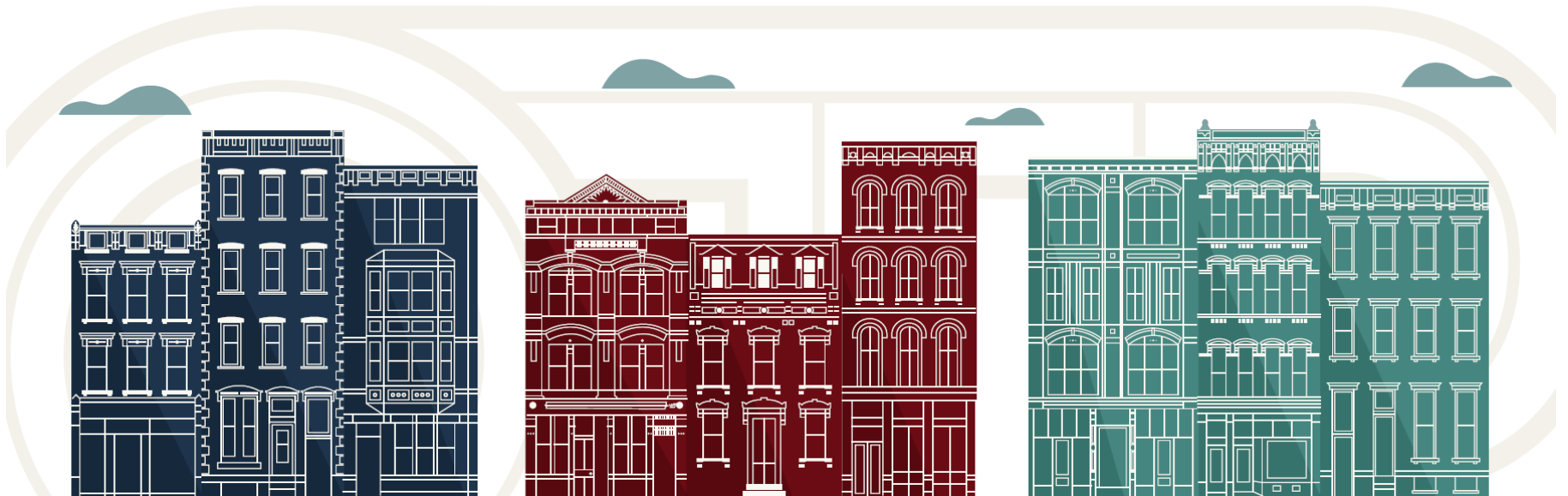
05 OPENINGS

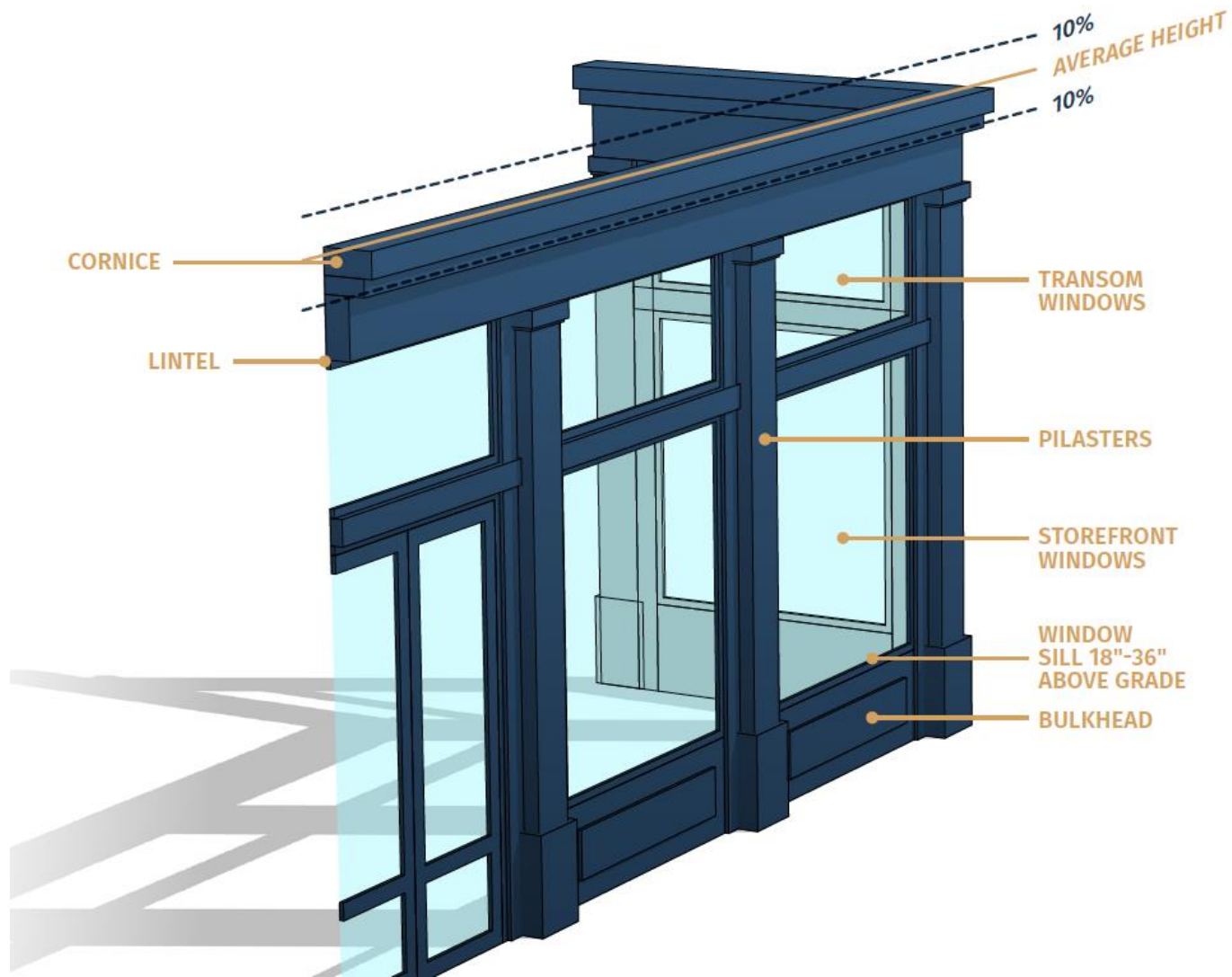
06 ROOF

07 MATERIALS

08 MISCELLANEOUS

09 APPENDIX





FUNDERS



#THANKSHAILE

Special thanks to
The Carol Ann and Ralph V. Haile, Jr. US Bank Foundation

Enhancing and Protecting the Over-the-Rhine Historic District

